

- Antiritorno infinito
  - 11 Cuscinetti di precisione
  - Corpo in metallo extra leggero
  - Bobina in alluminio mis. 8000
  - Frizione con dischi in acciaio e feltro
  - Archetto sovradimensionato
  - Sistema Worm Shaft
  - Rotore ad oscillazione lenta
  - Trattamento antisalsedine
  - Componentistica interna completamente in acciaio inox
  - Manovella tornita in metallo
  - Rullino scorriolo di riserva in dotazione
- MAX DRAG 20 KG
- One Way Clutch
  - 11 Precision ball bearings
  - Extra light metal body
  - Aluminium spool size 8000
  - Drag washers in SS and felt
  - Oversized bail arm
  - Worm Shaft system
  - Slow oscillation rotor
  - Full saltwater treatment
  - All internal components in stainless steel
  - Metal CNC handle
  - Spare line roller included

MAX DRAG 20 KG



ALU SPOOL S1001009



ALU SPOOL S1001010



TEFLON SPOOL S1001008



10+1 BALL BEARINGS

ONE WAY CLUTCH

INFO SHIZUKA SK10 - 10+1 B.B.

CODE	SIZE	MIN. PACK	LINE CAPACITY	WEIGHT (GR.)	RATIO	PRICE
S1001080 - SK10	8000	10	MM/MT. 0.20/390 0.24/270 0.26/230	627	4.6:1	€ 76,20
ALU SPOOL S1001009	9000	10	MM/MT. 0.30/470 0.35/350 0.40/265			€ 18,20
ALU SPOOL S1001010	10000	10	MM/MT. 0.40/400 0.45/310 0.55/210			€ 18,20
TEFLON SPOOL S1001008	8000	10	MM/MT. 0.20/390 0.24/270 0.26/230			€ 6,90

- Antiritorno infinito
- 7 Cuscinetti di precisione in acciaio inox
- Corpo extra resistente
- Speciale rotore alleggerito
- Bobina conica extra-shallow in alluminio
- Archetto sovradimensionato
- Rotore ad oscillazione lenta
- Trattamento completo antisalsedine
- Manovella tornita in metallo
- Pomello da combattimento in gomma

### 18 KILOS CARBON DRAG

- One Way Clutch
- 7 Precision SS ball bearings
- Heavy duty construction
- Special lightened rotor
- Alu conic extra-shallow spool
- Oversized bail arm
- Slow oscillation rotor
- Full saltwater treatment
- Metal CNC handle
- Rubber fight knob

### 18 KILOS CARBON DRAG



ALU SPOOL S1000989



TEFLON SPOOL S1000988



INFO	SHIZUKA SK9 - 6+1 B.B.						
CODE	SIZE	MIN.PACK	LINE CAPACITY	WEIGHT (GR.)	RATIO	PRICE	
S1000980 - SK9	8000	10	MM/MT. 0.40/90 0.48/80 0.57/55	641	4.6:1	€ 59,80	
ALU SPOOL - S1000989	9000	10	MM/MT. 0.40/330 0.48/210 0.57/150			€ 14,70	
TEFLON SPOOL - S1000988	8000	10	MM/MT. 0.40/90 0.48/80 0.57/55			€ 5,50	

**SHIZUKA****SK3 - 2+1 B.B.**

2+1 BALL  
BEARINGS

ONE  
WAY  
CLUTCH

INFO SHIZUKA SK3						
CODE	SIZE	MIN. PACK	LINE CAPACITY	WEIGHT (GR.)	RATIO	PRICE
S1000301	10	10	MM/MT 0.20/195 0.25/120	250	5.5:1	€ 14,40
S1000302	20	10	MM/M 0.20/230 0.25/150	260	5.5:1	€ 14,90
S1000303	30	10	MM/MT 0.30/150 0.35/110	290	5.2:1	€ 16,30
S1000304	40	10	MM/MT 0.35/130 0.40/100	300	5.2:1	€ 16,70
S1000305	50	10	MM/MT 0.40/150 0.50/95	370	5.2:1	€ 17,10
S1000306	60	10	MM/MT 0.50/115 0.60/80	390	5.2:1	€ 17,50

**SHIZUKA****SK5 - 3+1 B.B.**

- Antiritorno infinito
- 4 Cuscinetti
- Corpo in grafite extra forte
- Bobina in alluminio
- Bobina di ricambio in grafite

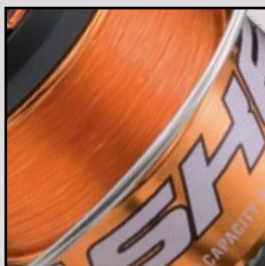
- One way clutch
- 4 Ball bearings
- Strong graphite construction
- Aluminium spool
- Graphite spare spool

INFO SHIZUKA SK5 - 3+1 B.B.						
CODE	SIZE	MIN. PACK	LINE CAPACITY	WEIGHT (GR.)	RATIO	PRICE
S1000550	5000	10	MM/MT. 0.35/195 0.40/150 0.50/95	420	5.2:1	€ 20,30
S1000560	6000	10	MM/MT. 0.45/140 0.50/115 0.60/80	440	5.2:1	€ 20,70
S1000570	7000	10	MM/MT. 0.40/395 0.50/250 0.60/175	560	4.1:1	€ 25,10
S1000580	8000	10	MM/MT. 0.40/485 0.50/310 0.60/215	700	4.1:1	€ 26,20

ONE  
WAY  
CLUTCH

3+1 BALL  
BEARINGS

**SHIZUKA**



- Sharp Stop Antireverse
  - 1 Ball bearing
  - Strong graphite construction
  - Aluminium handle
  - Aluminium spool
  - Graphite spare spool
- PRELOADED ORANGE LINE**

- Antiritorno Sharp Stop
  - 1 Cuscinetto
  - Corpo in grafite extra forte
  - Manovella in alluminio
  - Bobina in alluminio
  - Bobina di ricambio in grafite
- FILO ARANCIO INCLUSO**

INFO SHIZUKA SK6 - ORANGE 2000 - 1 B.B.						
CODE	SIZE	MIN.PACK	LINE CAPACITY	WEIGHT (GR.)	RATIO	PRICE
S1000620	2000	10	MM/MT. 0.18/285 0.20/230 0.25/150	260	5.5:1	€ 14,90

**SHIZUKA****SK6 3000 - 1 B.B.**

- Sharp Stop Antireverse
- 1 Ball bearing
- Strong graphite construction
- Aluminium handle
- Aluminium spool
- Graphite spare spool

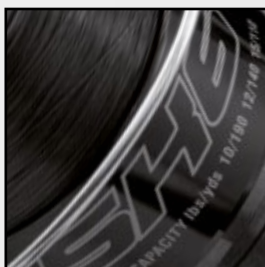
GREY PRELOADED LINE

- Antiritorno Sharp Stop
- 1 Cuscinetto
- Corpo in grafite extra forte
- Manovella in alluminio
- Bobina in alluminio
- Bobina di ricambio in grafite

FILO GRIGIO INCLUSO

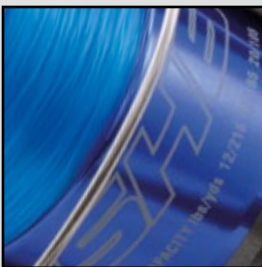
INFO SHIZUKA SK6 - GREY 3000 - 1 B.B.						
CODE	SIZE	MIN.PACK	LINE CAPACITY	WEIGHT (GR.)	RATIO	PRICE
S1000630	3000	10	MM/MT. 0.25/215 0.30/150 0.35/110	290	5.2:1	€ 15,50

**SHIZUKA**



- Sharp Stop Antireverse
  - 1 Ball bearing
  - Strong graphite construction
  - Aluminium handle
  - Aluminium spool
  - Graphite spare spool
- BLACK PRELOADED LINE**
- Antiritorno Sharp Stop
  - 1 Cuscinetto
  - Corpo in grafite extra forte
  - Manovella in alluminio
  - Bobina in alluminio
  - Bobina di ricambio in grafite
- FILÒ NERO INCLUSO**

INFO SHIZUKA SK6 - BLACK 4000 - 1 B.B.						
CODE	SIZE	MIN.PACK	LINE CAPACITY	WEIGHT (GR.)	RATIO	PRICE
S1000640	4000	10	MM/MT. 0.30/175 0.35/130 0.40/100	310	5.2:1	€ 15,70

**SHIZUKA****SK6 5000 - 1 B.B.**

- Sharp Stop Antireverse
- 1 Ball bearing
- Strong graphite construction
- Aluminium handle
- Aluminium spool
- Graphite spare spool
- BLUE PRELOADED LINE
- Antiritorno Sharp Stop
- 1 Cuscinetto
- Corpo in grafite extra forte
- Manovella in alluminio
- Bobina in alluminio
- Bobina di ricambio in grafite
- FILO BLU INCLUSO

INFO		SHIZUKA SK6 - BLUE 5000 - 1 B.B.				
CODE	SIZE	MIN.PACK	LINE CAPACITY	WEIGHT (GR.)	RATIO	PRICE
S1000650	5000	10	MM/MT. 0.35/195 0.40/150 0.50/95	405	5.2:1	€ 16,50

**SHIZUKA**



- Sharp Stop Antireverse
  - 1 Ball bearing
  - Strong graphite construction
  - Aluminium handle
  - Aluminium spool
  - Graphite spare spool
- RED PRELOADED LINE**

- Antiritorno Sharp Stop
  - 1 Cuscinetto
  - Corpo in grafite extra forte
  - Manovella in alluminio
  - Bobina in alluminio
  - Bobina di ricambio in grafite
- FILO ROSSO INCLUSO**

INFO SHIZUKA SK6 - RED 6000 - 1 B.B.						
CODE	SIZE	MIN.PACK	LINE CAPACITY	WEIGHT (GR.)	RATIO	PRICE
S1000660	6000	10	MM/MT. 0.45/140 0.50/115 0.60/80	420	5.2:1	€ 16,90



# SHIZUKA SK7 - 2 B.B.



- Sharp Stop Antireverse
- 2 Ball bearings
- Strong graphite construction
- Graphite spool
- WHITE PRELOADED LINE
- BLUE LINE ON SIZE 7000

- Antiritorno Sharp Stop
- 2 Cuscinetti
- Corpo in grafite extra forte
- Bobina in grafite
- FILO BIANCO INCLUSO
- FILO BLU SULLA MISURA 7000

INFO		SHIZUKA SK7 - 2 B.B.					
CODE	SIZE	MIN.PACK	LINE CAPACITY	WEIGHT (GR.)	RATIO	PRICE	
S1000710	1000	10	MM/MT. 0.18/235 0.20/195 0.25/120	219	5.2:1	€ 11,90	
S1000720	2000	10	MM/MT. 0.18/285 0.20/230 0.25/150	227	5.2:1	€ 12,10	
S1000730	3000	10	MM/MT. 0.25/215 0.30/150 0.35/110	257	5.2:1	€ 12,40	
S1000740	4000	10	MM/MT. 0.30/175 0.35/130 0.40/100	274	5.2:1	€ 12,50	
S1000750	5000	10	MM/MT. 0.35/195 0.40/150 0.50/95	362	5.2:1	€ 12,90	
S1000760	6000	10	MM/MT. 0.45/140 0.50/115 0.60/80	398	4.1:1	€ 13,20	
INFO		SHIZUKA SK7 - 7000 - 2 B.B.					
CODE	SIZE	MIN.PACK	LINE CAPACITY	WEIGHT (GR.)	RATIO	PRICE	
S1000770	7000	10	MM/MT. 0.40/395 0.50/250 0.60/175	650	4.1:1	€ 15,60	